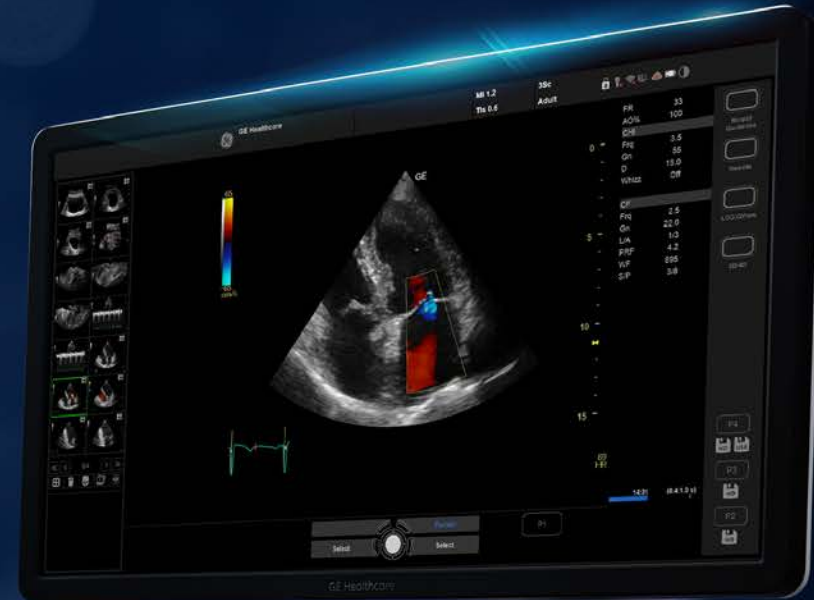




Versana Premier

Care with Confidence



A GE Versana Premier ultrasound system is shown from a low-angle perspective. The main monitor displays a cardiac ultrasound image with a heart cross-section and a green ECG trace. To the left, a secondary monitor shows a grid of smaller image thumbnails. The control console below the monitors features a large touch-screen interface, a keyboard, and various physical buttons and knobs. The background is a dark blue with abstract, glowing light patterns.

ELEVATE YOUR DIAGNOSTIC CAPABILITIES WITH **Versana Premier™**

Powerful. Versatile. Productive.
World-class ultrasound designed for peace of mind.

Whether you're working in a cardiac care clinic, independent imaging center, cardiology specialty practice, or other facility, you can count on Versana Premier, the premium system from the Versana family of ultrasound systems, to reliably produce high-quality images for the patients you see daily. In addition to performing common heart and vascular ultrasound exams, you can use this affordable, versatile system to deliver highly specialized scans.


Transthoracic echo, Doppler echo, Stress echo, Contrast echo†


†Not available in all regions. Please ask your GE Healthcare sales representative about availability.


A PARTNER YOU CAN TRUST


Reach new levels of excellence in diagnostics and reporting


Versana Premier from GE Healthcare, a trusted healthcare partner, is a reliable and easy to use ultrasound system. With advanced capabilities and educational support, our complete solution can meet your practice's needs now and into the future.


 World-class image quality supported by the **VisionBoost*** advanced imaging platform

 **Multi-gesture functionality*** enabled by a sensitive touch screen that results in an intuitive, intelligent workflow

 Includes **Whizz clinical features** that save time and simplify workflow

 Completely backed by GE Healthcare for **education and service**

 Supported by **Scan Coach**, a reference tool to help you obtain desired scan planes

 The flexibility to **grow** with your system by purchasing additional software features and probes

*Available on Versana Premier V2.



**WIDE RANGE
OF PROBES**



A COMPLETE SOLUTION

A versatile, intelligently productive ultrasound system that meets your needs

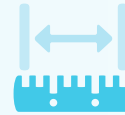
Multiple exam protocols, tools and applications help you diagnose a wide spectrum of cardiovascular conditions accurately and efficiently



Includes **Stress Echo**, **Auto EF**, **TVI** and **AMM** (Anatomical M-Mode)



Create custom exam protocols and standardized workflow with **Scan Assistant**



Measure intima-media thickness with **Auto-IMT**



Save time with **25-Second Reboot Speed*** and simplified patient management, scanning and reporting workflows



Examine vessel-wall irregularities and stenosis reliably with sensitive **B-Flow™** and **B-Flow Color Imaging**



Upload images and reports to the **Tricefy™ Cloud**** or network storage (EMR, PACS) for consultation or sharing with referring physicians



Make automated **2D Measurements** and **Volume Calculations** in certain applications



Use **Battery Power** to move the system from room to room without powering down



Enhance or suppress the color flow signal with **Whizz Color Flow***



Shift between Smooth Mode and Sharp Mode to view image features as preferred with **Whizz Easy Style***



Optimize images while scanning with **Whizz Dynamic Image Tuning**



Add **Voice Comments** to exams

*Available on Versana Premier V2.

**Requires internet connection and a Tricefy subscription.

CHECK OUT THESE CONVENIENT FEATURES

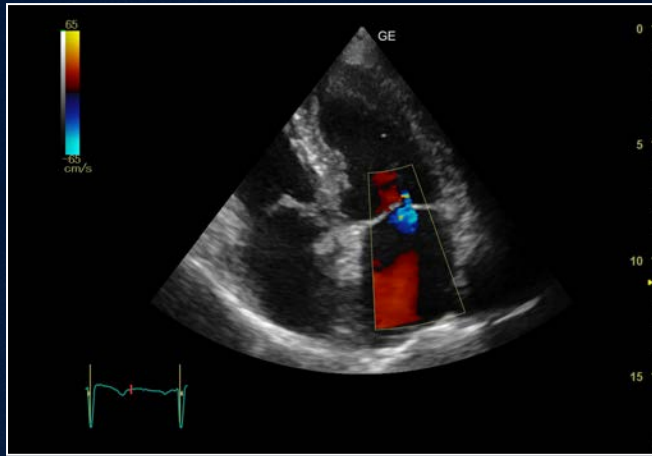


Versana Premier

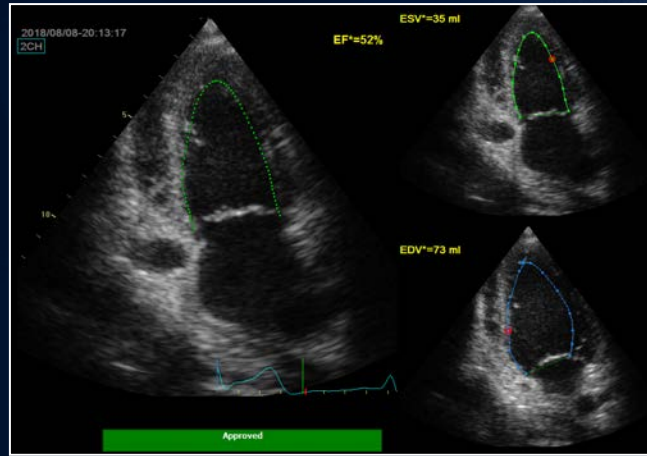
brings broad cardiac imaging capabilities and efficient workflow to your practice. Meet your financial goals and grow your practice with this world-class ultrasound system.



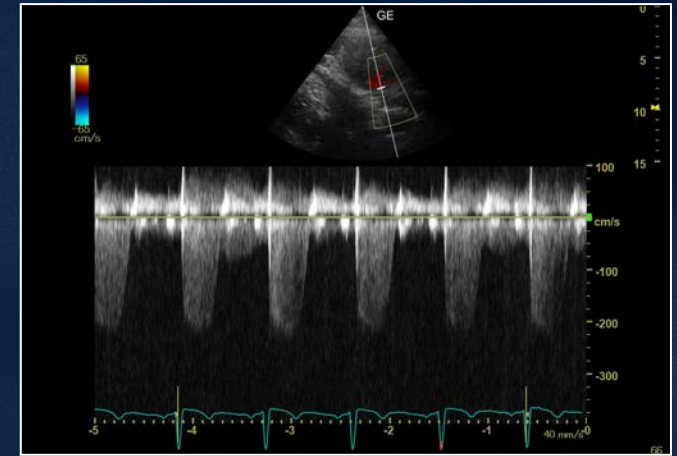
IMAGE GALLERY



Mitral Valve with color Doppler



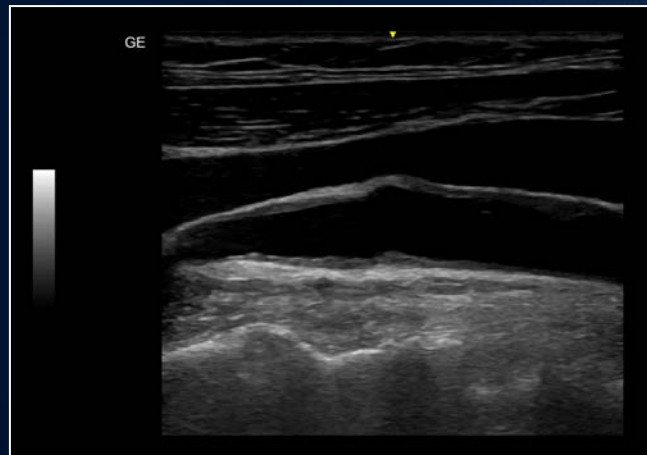
Auto EF



CW Doppler RVOT



Carotid with PW Doppler



Carotid intima media



Lower extremity vein with spontaneous flow

AN OPPORTUNITY FOR GROWTH

Ultrasound to serve you well today and set your course for the future

Advance your ultrasound skills with Versana Club

No matter your skill level, you can learn to harness the full power of your Versana Premier system with a membership in the Versana Club. The Versana Club offers resources to help you build your skills, network with others and share your ultrasound knowledge. Membership perks include:

- Image-sharing with peers around the world
- Web-based video tutorials and other educational offerings
- Information on Versana service solutions and products
- Articles on ultrasound and patient care

Register now at www.versanaclub.net



Experience the strength of the GE Healthcare family

Your support team is fully trained, GE Healthcare qualified, deeply experienced, and nearby.

- Expert support during and after purchase
- In-depth staff product training
- Remote or on-site technical, clinical and network support

Customized solutions and path to growth

Versana Premier can scale to suit your practice today and grow with you. Select a basic console and software. Then choose from a variety of optional upgrades as your practice advances.



Versana Essential™†

Versana Premier™

Versana Balance™

Versana Active™

† Versana Essential is not available in the USA.



Versana Premier V2 pending 510k clearance in the USA.

Products mentioned in the material may be subject to government regulation and may not be available in all countries. Shipment and the effective sale can only occur after approval from the regulator. Contact your GE representative for details.

© GE, 2021

GE Healthcare reserves the right to make changes in specifications and features shown herein, or discontinue the product described at any time without notice or obligation. Contact your GE Healthcare representative for the most current information. GE, the GE Monogram, Versana Premier, Versana Essential, Versana Balance, Versana Active and B-Flow are trademarks of GE. Tricefy trademarks are registered trademarks of Trice Imaging, Inc. GE Healthcare, a division of GE.

April 2021
JB03735XX

